

**NUP155 Polyclonal Antibody**  
**Purified Rabbit Polyclonal Antibody (Pab)**  
**Catalog # AP57574****Specification**

---

**NUP155 Polyclonal Antibody - Product Information**

Application	IHC-P, IHC-F, IF, ICC
Primary Accession	<a href="#">O75694</a>
Reactivity	Rat
Host	Rabbit
Clonality	Polyclonal
Calculated MW	155199

**NUP155 Polyclonal Antibody - Additional Information****Gene ID** 9631**Other Names**

Nuclear pore complex protein Nup155, 155 kDa nucleoporin, Nucleoporin Nup155, NUP155, KIAA0791

**Dilution**

IHC-P ~ ~ N/A  
IHC-F ~ ~ N/A  
IF ~ ~ 1:50 ~ 200  
ICC ~ ~ N/A

**Format**

0.01M TBS(pH7.4), 0.09% (W/V) sodium azide and 50% Glyce

**Storage**

Store at -20 °C for one year. Avoid repeated freeze/thaw cycles. When reconstituted in sterile pH 7.4 0.01M PBS or diluent of antibody the antibody is stable for at least two weeks at 2-4 °C.

**NUP155 Polyclonal Antibody - Protein Information****Name** NUP155**Synonyms** KIAA0791**Function**

Essential component of nuclear pore complex. Could be essential for embryogenesis. Nucleoporins may be involved both in binding and translocating proteins during nucleocytoplasmic transport.

**Cellular Location**

Nucleus, nuclear pore complex {ECO:0000250|UniProtKB:P37199}. Nucleus membrane {ECO:0000250|UniProtKB:P37199}; Peripheral membrane protein {ECO:0000250|UniProtKB:P37199}; Cytoplasmic side {ECO:0000250|UniProtKB:P37199}. Nucleus

membrane {ECO:0000250|UniProtKB:P37199}; Peripheral membrane protein {ECO:0000250|UniProtKB:P37199}; Nucleoplasmic side {ECO:0000250|UniProtKB:P37199}.  
Note=In mitosis, assumes a diffuse cytoplasmic distribution probably as a monomer, before reversing back into a punctate nuclear surface localization at the end of mitosis {ECO:0000250|UniProtKB:P37199}

#### **Tissue Location**

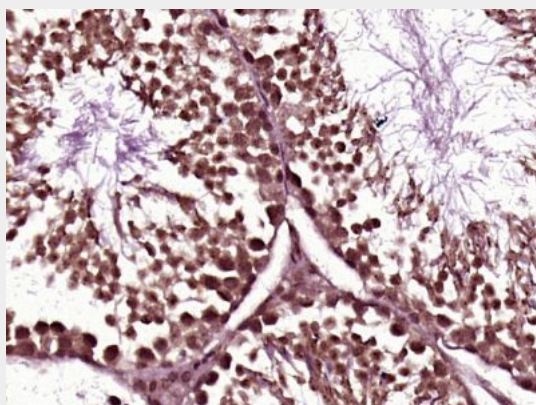
Expressed in all tissues tested, including heart, brain, placenta, lung, liver, skeletal muscle, kidney and pancreas

#### **NUP155 Polyclonal Antibody - Protocols**

Provided below are standard protocols that you may find useful for product applications.

- [Western Blot](#)
- [Blocking Peptides](#)
- [Dot Blot](#)
- [Immunohistochemistry](#)
- [Immunofluorescence](#)
- [Immunoprecipitation](#)
- [Flow Cytometry](#)
- [Cell Culture](#)

#### **NUP155 Polyclonal Antibody - Images**



Paraformaldehyde-fixed, paraffin embedded (Mouse testis); Antigen retrieval by boiling in sodium citrate buffer (pH6.0) for 15min; Block endogenous peroxidase by 3% hydrogen peroxide for 20 minutes; Blocking buffer (normal goat serum) at 37°C for 30min; Antibody incubation with (NUP155) Polyclonal Antibody, Unconjugated (bs-19543R) at 1:400 overnight at 4°C, followed by operating according to SP Kit(Rabbit) (sp-0023) instructions and DAB staining.